

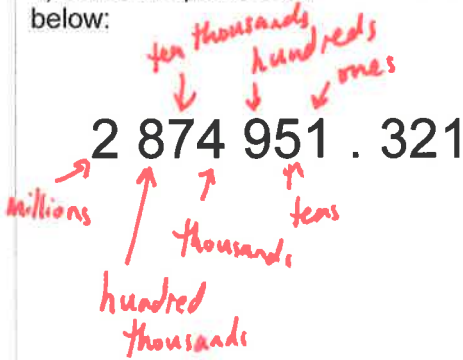
Decimals REVIEW

Decimals II

Key

DECIMALS REVIEW:

1) Write the place value name for each digit below:



2) Round to the nearest

- a) tens 16.1 b) ones 123.5
 20 124
- c) hundreds 1345 d) hundredths 2.396
 1300 2.40
- e) thousandths 0.6933 f) tenths 1.25
 0.693 1.3

3) Write the decimal that is given in words:

- a) 42 hundredths b) 8 tenths $\frac{8}{10} = \frac{4}{5}$
 $\frac{42}{100} = \frac{21}{50}$

4) Give the value as a fraction and a decimal:



$\frac{55}{100} = \frac{11}{20}$
 0.55

5) Write as a 'tenth fraction' and a 'hundredth fraction'.

- a) .6 = $\frac{60}{100}$ b) .40 = $\frac{40}{100} = \frac{4}{10}$
 $\frac{6}{10} = \frac{60}{100}$

6) Change to decimal:

- a) $\frac{63}{100}$ b) $\frac{9}{10}$ c) $\frac{8}{100}$
 0.63 0.9 0.08

7) Change to fraction:

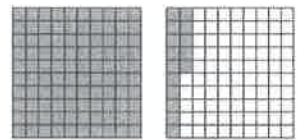
- a) 0.61 b) 0.05 c) 0.3
 $\frac{61}{100}$ $\frac{5}{100} = \frac{1}{20}$ $\frac{3}{10}$

8) Change to a mixed and improper fraction:

- a) 4.3 b) 4.33 c) 4.03
 $4\frac{3}{10}$ $4\frac{33}{100}$ $4\frac{3}{100}$
 $\frac{43}{10}$ $\frac{433}{100}$ $\frac{403}{100}$

9) Change to a mixed fraction, improper fraction, and decimal:

Mixed: $\frac{15}{100} = 1\frac{3}{20}$
 Imp: $\frac{115}{100} = \frac{23}{20}$ Dec: 1.15



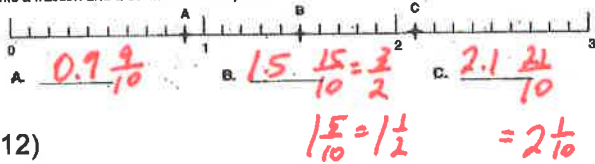
10) Which is greater?

- a) 0.7 or 0.07? b) $\frac{63}{10}$ or $\frac{63}{100}$? c) 3.4 or 3.40?
 $\frac{7}{10}$ $\frac{7}{100}$ 6.3 0.63 $\frac{34}{10}$ $\frac{340}{100} = \frac{34}{10}$
 SAME

Decimals REVIEW

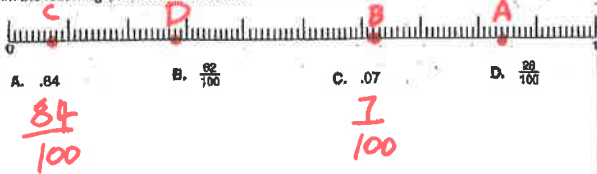
11)

Write a fraction and a decimal for each point:



12)

Mark the following fractions and decimals on the number line:



13) Put the numbers in order from smallest to largest:

8.5 , 8.05 , $8\frac{55}{100}$, $\frac{86}{10}$

8.05 , 8.5 , $8\frac{55}{100}$, 8.55 , 8.6

14) Find a number in between 0.4 and 0.5

0.45

15) What's greater: 0.68 or 0.7?

0.70

16) Write as a fraction: a) 0.431 b) 0.067

$\frac{431}{1000}$ $\frac{67}{1000}$

17) Which is bigger?

a) 0.5 or 0.496 b) 0.27 or 0.237?

0.500

18) Convert to decimal:

a) $\frac{3}{1000}$ b) $\frac{2}{5} = \frac{4}{10}$ c) $\frac{7 \times 5}{20 \times 5} = \frac{35}{100} = 0.35$

0.003 0.4 0.35

19) Multiply:

a) 0.9×10 b) 3.45×10 c) 0.7×100

9 34.5 70

d) 1.23×100 e) $.2 \times 1000$ f) 5.44×1000

123 200 5440

20) Divide:

a) $0.87 \div 10$ b) $4.3 \div 10$ c) $0.8 \div 100$

0.087 0.43 0.008

d) $9.8 \div 100$ e) $.4 \div 1000$ f) $8.07 \div 1000$

0.098 0.0004 0.00807