

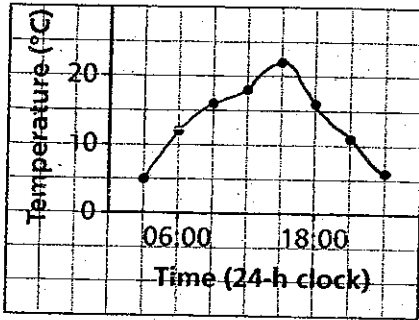
Chapter 5 Quiz (5.5 - 5.7) NO CALCULATOR

Name: _____

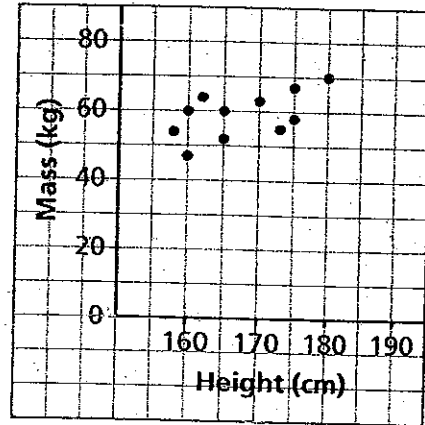
Date: _____

1) Which of these graphs represents a function?

a) **Outside Temperature over a 24-h Period**



b) **Masses of Students against Height**

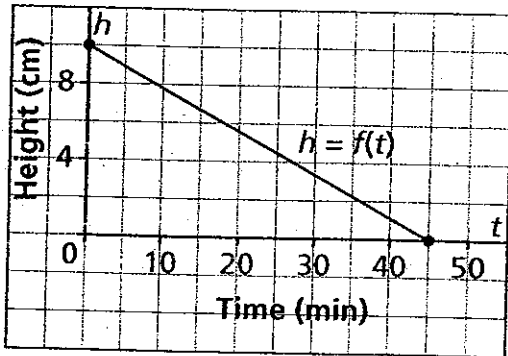


Answer: _____

Is this function continuous or discrete? _____

2) This graph shows how the height of a burning candle changes with time.

Height of a Burning Candle



a) What are the coordinates of the vertical intercept? _____
 What are the coordinates of the horizontal intercept? _____

b) What are the domain and range of this function?

Domain: _____

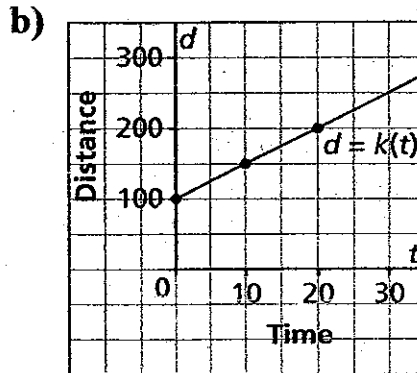
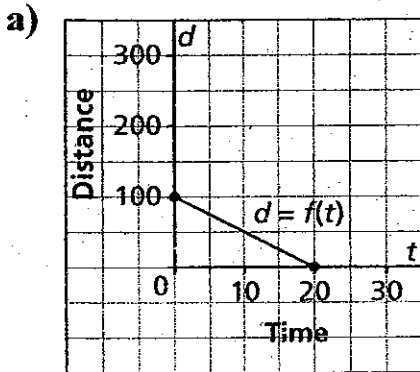
Range: _____

3) Which of the following equations represent linear relations?

- i) $x = -2$ ii) $y = x + 25$ iii) $y = 25$ iv) $y = x^2 + 25$

Answer: _____

4) Which graph has a rate of change of -5 and a vertical intercept of 100?



A or B? _____

5) Which table of values ^{below} represents a linear relation?

A or B? _____

How do you know?

a) The relation between the number of bacteria in a culture, n , and time, t minutes.

t	n
0	1
20	2
40	4
60	8
80	16
100	32

b) The relation between the amount of goods and services tax charged, T dollars, and the amount of the purchase, A dollars

A	T
60	3
120	6
180	9
240	12
300	15